

# BCV Mixed (EUR)

Fund domicile: Luxembourg Data as of 30.04.2012

## Fund facts

### Risk



BCV Mixed (EUR) is one of the sub-funds in BCV STRATEGIC FUND, a Luxembourg-incorporated umbrella investment fund. It reflects BCV's investment policy, founded on an internationally-gearred asset and currency allocation strategy aimed at achieving an optimal risk/reward trade-off. The sub-fund comprises equal weightings of bonds and other interest-bearing securities (45%) and equities (45%). Its prime objectives is to achieve long-term capital growth, with generating income being a complementary aim.

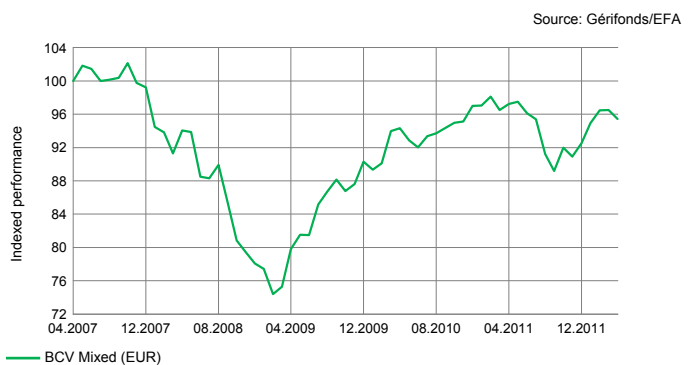
Accounting NAV	EUR 106.72
High / Low 2012	EUR 109.14/104.55
Fund assets in million	EUR 57.71
TER as of 31.12.2011	1.55%
Management fee	1.10%
Launch date	13.06.2005
Security number / ISIN	4797821 / LU0398846310
Reuters / Bloomberg	0#GERI1= / AMCMIXE SW
Base currency	EUR
Distribution	-
Gross yield	-
Investment advisor	BCV

## Performance in EUR

	1 Month	Since 31/12/11	1 Year	3 Years
<b>BCV Mixed (EUR)</b>	<b>-1.1%</b>	<b>3.1%</b>	<b>-1.8%</b>	<b>19.6%</b>

*Annual Volatility	8.28%	*Risk free	1.57%
*Sharpe Ratio	-0.30	*Beta	n.a.

\*Over 5 Years

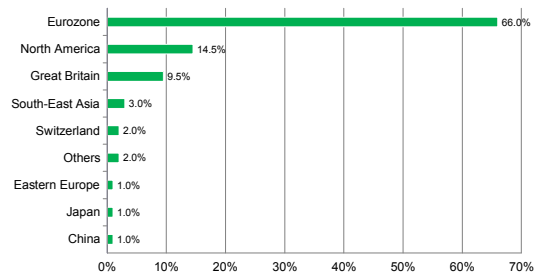


2007	2008	2009	2010	2011
1.0%	-21.3%	15.7%	7.4%	-4.6%

## Fund's asset allocation

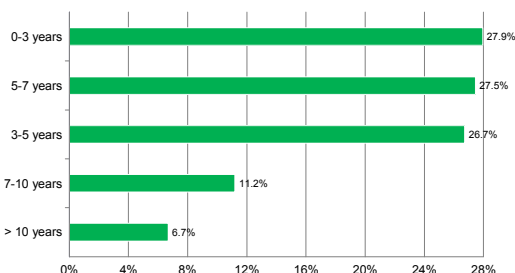
Country/Zone	Short term	*Bonds	Duration	*Equities	Others investm.	Total
Switzerland	0.00	0.00		2.00		2.00
Eurozone	6.00	36.00		20.00	4.00	66.00
Great Britain	0.00	4.00		5.50		9.50
Sweden	0.00	0.00		0.00		0.00
Eastern Europe	0.00	0.00		1.00		1.00
North America	0.00	2.00		12.50		14.50
Latin America	0.00	0.00		0.00		0.00
Japan	0.00	0.00		1.00		1.00
South-East Asia	0.00	0.00		3.00		3.00
Others	0.00	0.00		2.00		2.00
China	0.00	0.00		1.00		1.00
<b>Total</b>	<b>6.00</b>	<b>42.00</b>		<b>48.00</b>	<b>4.00</b>	<b>100.00</b>

## Currency zone breakdown

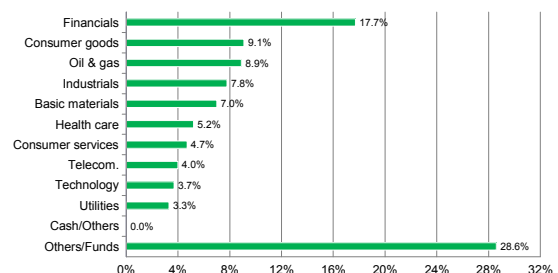


\* Including investments managed using portfolio insurance techniques

## BONDS: maturity breakdown



## EQUITIES: sector breakdown



Past performance is not indication of current or future performance. These performance data do not take account of commissions and costs incurred on the issue and redemption of units.



Tel. 021/212 20 51 - E-mail: funds@bcv.ch